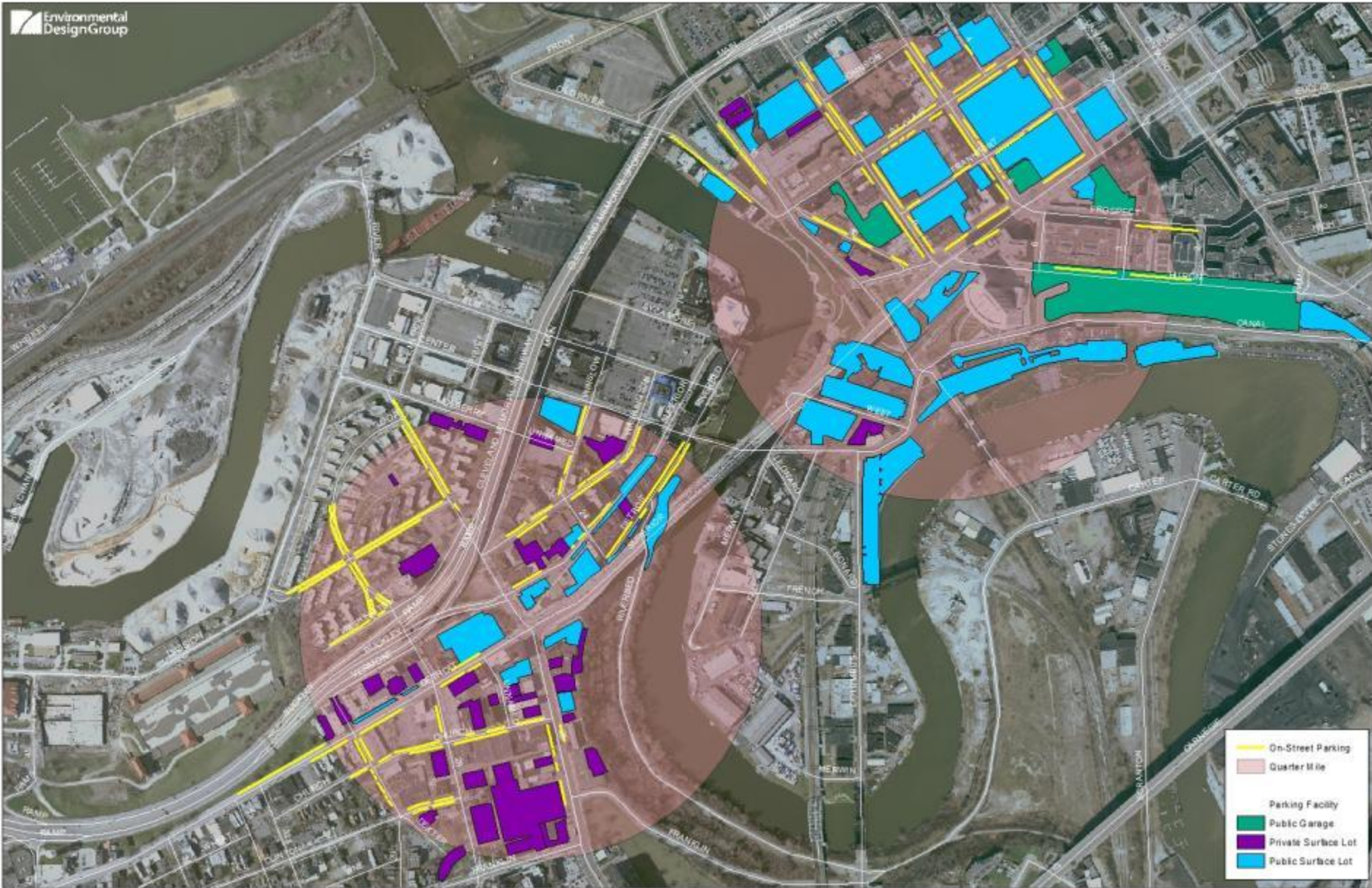


¼ Mile (5 Minute Walk) Parking Inventory



Parking Analysis

WEST SIDE:

Parking is more of a concern on the west side of the bridge as it is not as intuitive as on the east side of the bridge. Parking heading down into the flats on the west side tends to be visually disconnected to the bridge area with smaller lots and on street parking.

There are parking lots in the western study area that are not clearly identified as public or unrestricted. While there are gated and restricted surface lots, others are not clearly labeled as private lots adding confusion as to its public use.

Government or publicly owned lots such as the County Engineers facility do have guest parking but are considered restricted. These lots could, however, be used for event space if coordinated with various agencies.

Lutheran Hospital (a Cleveland Clinic Hospital), owns a majority of the surface lots on the west side of the bridge near West 25th that are within a ¼ mile radius, 5 minute walk, of the bridge. However, this is considered private/restricted parking.



Parking Analysis



EAST SIDE:

The east side of the study incorporates most of the downtown parking lots. There is public parking along most of the public streets with significant private paid lots available. With typical downtown uses and venues, availability varies depending on time and day of use. Rates have been climbing as of recent with the additional off-peak businesses such as restaurants, bars, and new casino.

The east side of the study area seems more intuitive and convenient as it is probably used by the public more than the west side of the study area.

For potential patrons coming from outside communities, drivers will often travel to the bridge through downtown interstate exits taking them through downtown and closer the east side parking opportunities.

Costs and availability will be the main concern for parking on this side of the project area.



NOACA/Plain Dealer Parking Inventory



VEHICULAR TRAFFIC COUNT SUMMARY

Municipality: Cleveland at Intersection of West 29th Street and Bliss Road / West Superior Ave

Date: 07/10/2012 By T.M. Comments Project 12400

Weather: Sun Temperature 30.0 to 32.0 Reporting by J.M. Date entered 07/10/2012 NOCA 2006 - 2009 NOCA 2006 - 2009

TIME PERIOD	W. 29th St. FROM WEST				W. 29th St. FROM EAST				W. Superior Ave FROM WEST				Superior Ave Bridge FROM WEST				TOTAL ALL	TOTAL	PUBLIC WORK FACTORS												
	Left	Thru	Right	Total	Thru	Left	Right	Total	Thru	Left	Right	Total	Thru	Left	Right	Total			Thru	Left	Right	Total									
06:00																															
07:00	17	100	20	137	10	54	164	327	290	26	5	551	7	115	28	150	21	25	261	534	385	475	30	20	1135	1054	0.108	0.171	0.035	0.105	
08:00	20	100	20	140	10	54	164	327	290	26	5	551	7	115	28	150	21	25	261	534	385	475	30	20	1135	1054	0.108	0.171	0.035	0.105	
09:00	16	95	17	128	7	36	101	144	124	10	5	552	2	104	26	130	14	13	141	277	172	523	50	16	776	1308	0.109	0.167	0.036	0.112	
10:00																															
11:00	20	100	20	140	14	7	111	132	101	20	7	540	0	105	25	130	15	14	134	131	101	100	15	10	647	1202	0.107	0.168	0.035	0.112	
12:00	20	100	20	140	14	7	111	132	101	20	7	540	0	105	25	130	15	14	134	131	101	100	15	10	647	1202	0.107	0.168	0.035	0.112	
1:00	16	94	17	127	11	114	145	166	131	10	5	640	0	104	24	128	12	12	126	127	101	102	15	10	642	1442	0.108	0.167	0.035	0.112	
2:00																															
3:00	17	97	19	133	7	1	104	112	101	13	2	753	0	107	24	131	16	15	138	133	104	101	11	11	630	1091	0.108	0.168	0.035	0.112	
4:00	0	107	19	126	12	1	104	116	101	12	5	664	0	104	22	127	10	10	134	132	101	100	7	10	1118	1079	0.108	0.167	0.035	0.112	
5:00	0	107	19	126	12	1	104	116	101	12	5	664	0	104	22	127	10	10	134	132	101	100	7	10	1118	1079	0.108	0.167	0.035	0.112	
6:00																															
7:00																															
8:00																															
9:00																															
TOTAL	164	1009	676	2849	24	9	1107	1464	101	1084	217	24	6442	24	1136	618	390	100	224	206	2007	1046	107	106	107	107	116.70				
ADT	205	1264	1416	4737	3.06	0.106	1398	1876	127.5	137.0	27.6	3.0	1000.0	30.0	140.7	77.1	47.0	12.6	137.0	256.0	256.0	134.0	134.0	13.4	13.4	140.1	140.1	0.036	0.056	0.036	0.056

TMC ENGINEERS, INC.
 4547 Hudson Drive
 Olmsted, Ohio 44134
 (330) 446-6400 FAX: (330) 446-6417



Traffic Count Location (2012)
ADT: 24,360

NOACA, 2006 - 2009
ADT: 15,650

NOACA, 2006 - 2009
ADT: 11,960

Traffic

Turning movement counts are being recounted to include W. Superior Avenue, the 5th leg of the East 9th, Superior, Huron intersection, to accommodate NOACA's concerns about the movement of that intersection.

The average daily traffic on Superior Avenue at the intersection with West 9th and Huron is 24,360 cars per day. (Source: TMS, 2012)

The average daily traffic on West 25th at Detroit Avenue was 15,650 cars per day (Source: NOACA, 2006-2009)

Bicycle traffic is very light on the Detroit/Superior Bridge, especially compared to pedestrian traffic.

This matches the many antidotal comments that the Consultant Team has been hearing from bicyclists in the area that they do not like riding on the bridge due to its design and lack of being comfortable or safe, or the perception of not being comfortable or safe.

Traffic Count Location (2012)
ADT: 24,360

ADT: 15,650
NOACA, 2006 - 2009

ADT: 11,960
NOACA, 2006 - 2009